

All closed rooms with no return to have transfer grille or jumper duct

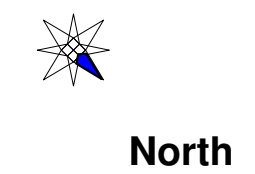
Low energy consumption criteria, building design equipment locations, and local building code requirements may hinder customer comfort preferences. Continuous blower operation may be required to equalize temperature differences. Calculations indicate that the provided return air vents are sufficient; However provide additional return air as dictated by performance requirements.

All duct in unconditioned space insulated with R8

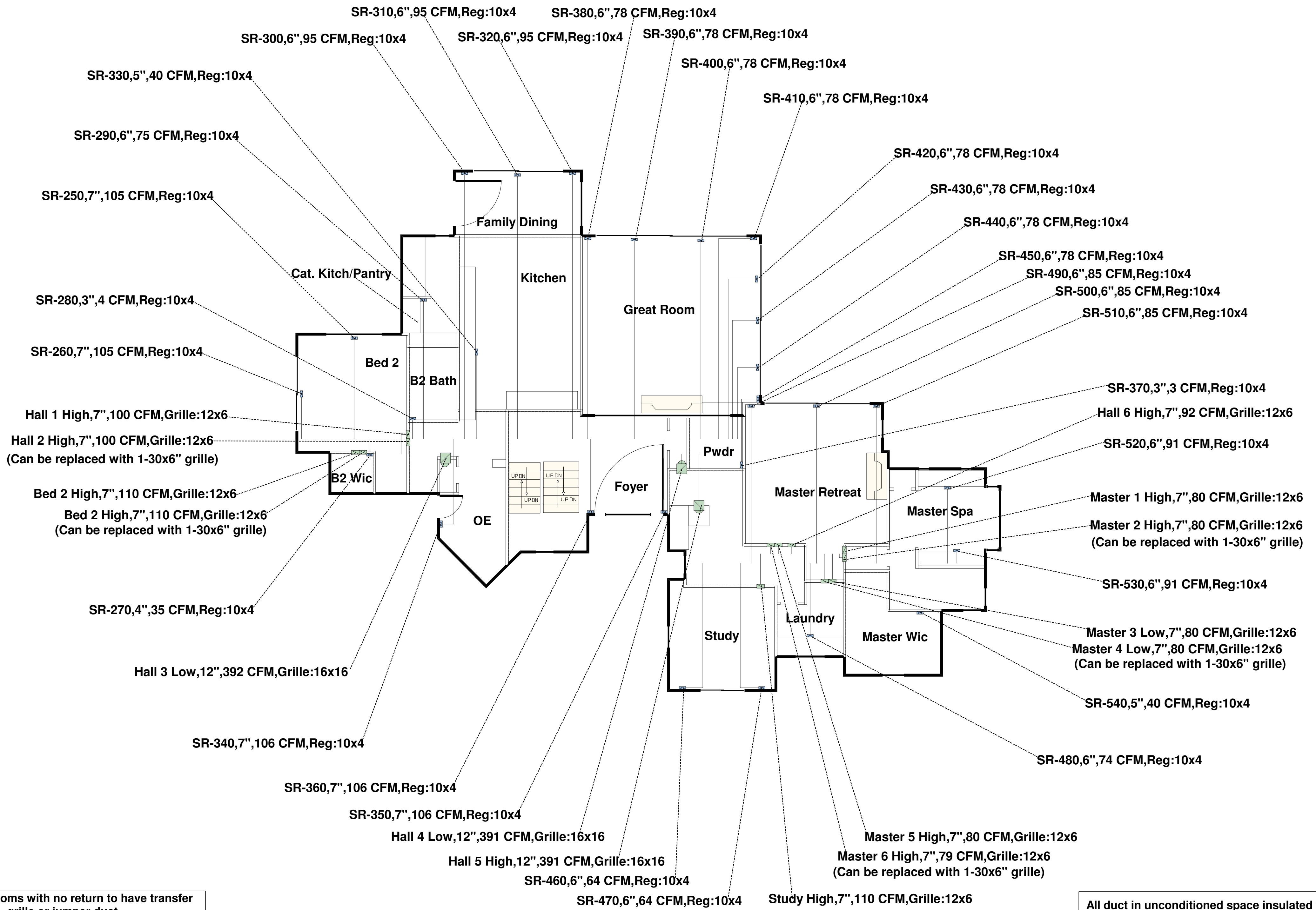


### Sample House

### Basement



Page:24x18"  
Scale:1/8"=1'



All closed rooms with no return to have transfer grille or jumper duct

All duct in unconditioned space insulated with R8



Sample House

First Floor

Page:24x18"  
 Scale:1/8"=1'